

## CN Milton Logistics Hub Community Consultation Committee January to June 2025 Newsletter



*Photo 1. Progress from May 2021 to May 2025 of the underpass at Lower Base Line. The road will be reopened in July 2025. Construction is estimated to be 40% complete as of June 2025.*

# COMMUNITY CONSULTATION COMMITTEE

JANUARY TO JUNE 2025

CN MILTON LOGISTICS HUB PROJECT

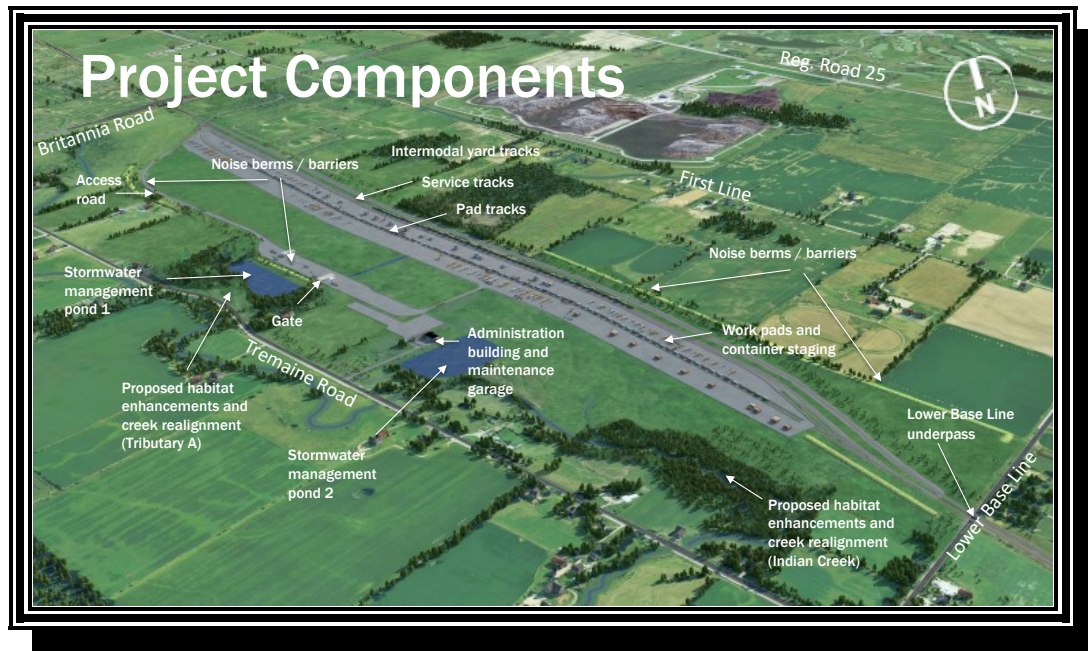


Photo 2. Concept diagram from Environmental Impact Statement, 2015

## CONTEXT

CN has advised the committee that they are spending ~\$250 million to build a new logistics hub to load and unload intermodal shipping containers in accordance with a federal approval. CN advises that consumer goods, including electronics, food products, household goods, car parts and health products, have been handled by an intermodal freight container from somewhere in the world. An "[intermodal freight container](#)" (sometimes informally called a "sea can") is a container designed to be moved from one mode of transport to another without unloading and reloading. The modes of transport of containers can be by water, rail and air.

The Milton Logistics Hub is at the centre of CN's network connecting ports on all three coasts with their 35,000km network across North America ([CN - Network Map \(geomapguide.ca\)](#)). Populations are increasing as is consumer demand so increased intermodal demand is expected.

### COMMITTEE INFORMATION

CN has established a Community Consultation Committee ("CCC") as an advisory forum to provide information, exchange ideas, listen to feedback, and address concerns from the community, Indigenous communities and all levels of government and other stakeholders as the Milton Logistics Hub Project (MLH) progresses through construction and into operation. The CCC provides a forum for CN to listen to and consider community feedback regarding concerns that may be raised related to the construction and operation of the Milton Logistics Hub.

As of December 2024, the Committee has:

- Held 18 virtual meetings;
- Held 5 in-person meetings;
- Participated in 6 site tours; and
- Established an active sub-committee to propose solutions for the heritage buildings on the site. 1 site tour was completed by the sub-committee and four tours with outside parties interested in re-use.



## COMMITTEE MEMBERS (JULY 2025)

NAME	ORGANIZATION	MEMBER SINCE	Primary Area of Interest
Allan Ehrlick	Halton Region Federation of Agriculture	2021	Maintaining farmland
Bianca Caramento	Milton Chamber of Commerce	2023	Business development
Danielle Havelka	Wilfrid Laurier University	2024	
Marsha Smith	Halton Environmental Network	2024	
Erin Caldwell	Community Member	2023	
Kelly Voisin	Community Member	2024	
Larry Chambers	Community Member	2021	Health and Safety
Lukas Reale	Great Gulf	2022	
Nancy Mott	Community Member	2021	
Rita Vogel Post	Milton RAIL (Residents Affected by Intermodal Lines)	2021	Health and Safety
Stephanie Carruth	Minds for Matter	2021	Trucker support
Mishal Naseer	Sustainable Milton	2025	
Darren Reynolds	CN	2021	
Ricky Wai Kei Chiu	CN	2024	
Edie Thome	Co-Facilitator	2021	
Terry Flynn	Co-Facilitator	2021	
Elizabeth Wells	Kirk & Co. (Committee Support)	2024	

## COMMITTEE NEWS

In June of 2025 long-time participant in the regulatory processes and the Community Consultation Committee, Wendy Roberts has stepped off the Committee but will remain an active member of the Heritage Subcommittee. We thank Wendy for her professional, thoughtful and respectful engagement on the committee. We look forward to continuing to work together to find the best solutions on the Heritage Subcommittee.

Taking Wendy's place is Mishal Naseer. Mishal is a professional planner with vast experience across Canada in the environmental assessment process including policy development as well as integration of Indigenous knowledge into cumulative assessment processes.

Mishal will be representing Sustainable Milton where she serves on the Board of Directors and provides support to the Communications team. Welcome Mishal!

# FEEDBACK AND OUTCOMES

## Tracking Opportunities, Questions and Issues

The Milton Community Consultation Committee uses a tracking document to log all suggestions and opportunities, questions, and outstanding issues. At every meeting a review of the document is conducted to ensure that input from the Committee is followed up on and a response is received.

A copy of the tracking document is submitted by CN to the regulatory body – the Impact Assessment Agency of Canada (IAAC) – as part of their evidence of compliance with respect to community consultation.

Below are some select items. A fulsome list of items and their actions/status is available upon request.

Main areas of interest are traffic impacts, emissions and general health and safety of the public using the space around the terminal.

<i><b>Current Tracker Items</b></i>	<i><b>Status</b></i>
Consider reuse options for heritage buildings on project site.	Heritage Subcommittee established July 2022; ten meetings held to-date; move feasibility study and costs estimate completed. One site is progressing with conversations on salvage opportunities with a local company. The second property is focused on ongoing discussions ongoing with interested parties for re-use in situ. Working with a local group to explore opportunities to use the house for a non-profit purpose.
Install signage to inform new residents of project along with more general communication in the community by CN.	Sign will be installed by the Britannia entrance by the end of 2025
Truck driver education.	Explore multilingual handouts with best practices.
Net-zero building design.	Before the end of 2025, the architect will present current plan, addressing CCC feedback.
Transparency and readability of environmental results.	Current construction deviations from plan are discussed in the CCC meetings. In addition, the CCC has asked to review formatting of operational reporting of air and soil quality monitoring efforts to ensure readability by the layperson.
Transparency of environmental performance.	CCC requested that the Independent Environmental Monitors as well as the monitors from the First Nations speak at a future CCC meeting. CN has agreed.
Provide further insight about the native plants that have medicinal purposes for animals.	CN has reached out to the Indigenous communities to see if there is a plant list they would like to suggest be considered for planting at the site. Waiting for feedback.
Expand Committee membership.	Co-facilitators to explore additional members through suggestions by committee members.



## JANUARY-JUNE 2025



*Photo 3: Site tour-June 2025. Members viewed the site from the north at the approximate location of the truck entrance off of Britannia.*



*Photo 4: The Heritage Subcommittee is working to facilitate a use of the house on CN property. A feasibility study funded by CN is currently being undertaken.*





*Photo 5: May 2023/May 2025 aerial view of Tributary A progress. Work is now completed and the system is functioning.*



*Photo 6: Indian Creek re-alignment. Progress shown over three years. Work is now completed and the system is functioning.*



*Photo 7: Stormwater management area Pond 2 from May 2022-May 2025.*





Photo 8: June 2025 site tour showing progress on the truck bridge leading to the terminal. Work connecting this truck route within the site to Britannia will begin in the summer of 2025.

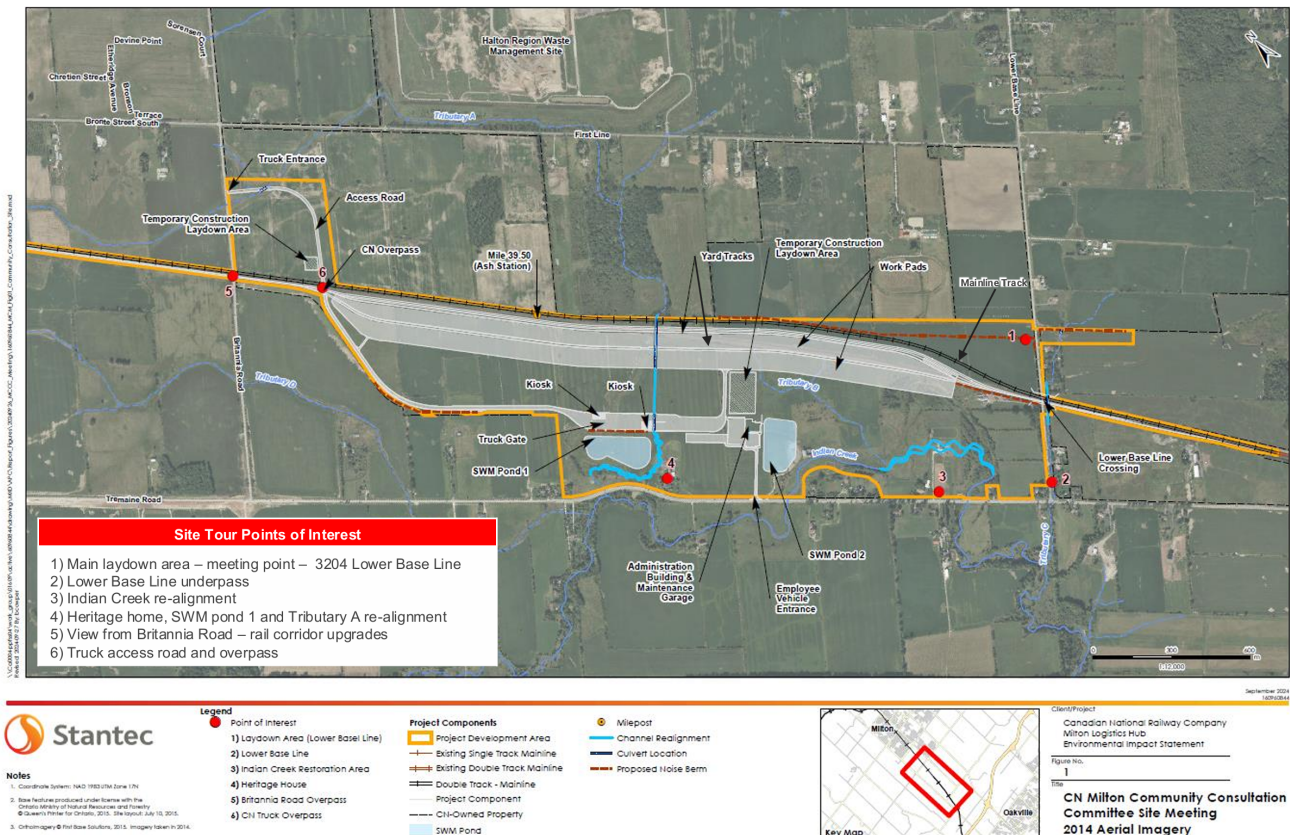


Photo 9: Map provided to CCC members for site tour in June 2025. Shows major project components for reference to the earlier photos.

---

## USEFUL LINKS AND CONTACTS

The Committee is made up of a broad spectrum of groups and individuals that ask questions of CN and make suggestions for the time during construction and into the operations of the MLH.

The Committee discussions are facilitated by independent facilitators (Terry Flynn and Edie Thome) who coordinate all meetings and tours, ensure a free flow of information, ensure conversations are documented and that suggestions are responded to in a timely manner.

The MCCC is made up of committee members who work through their networks and associations to bring questions, concerns and comments back to the Committee for consideration and response from CN.

Should you or your group wish to have Terry and Edie speak about the Committee and its workings, please contact us to make arrangements. Attendance can be virtual or in person.

Input through committee members and/or the facilitators can be given via email and should you wish, can remain completely anonymous.

### **Committee Information:**

Reach out to any committee member through their association.

Reach out to the committee via email: [contactmiltonccc@gmail.com](mailto:contactmiltonccc@gmail.com)

Reach out to the independent facilitators via email:

- [ediethomemccc@gmail.com](mailto:ediethomemccc@gmail.com)
- [terryflynnmccc@gmail.com](mailto:terryflynnmccc@gmail.com)

**Committee Website:** <http://www.miltonccc.com/>

### **Committee Documents:**

Found at: [Engaging With the Community | Milton | cn.ca](#)

1. Terms of Reference
2. CN appoints independent facilitations to lead community feedback forum
3. Community consultation committee established to further two-communication on the CN Milton Logistics Hub
4. Community Liaison Communication Process
5. 2021 Community Engagement Summary

### **Project Documents:**

[Decision Statement \(Issued under the Canadian Environmental Assessment Act, 2012\)](#)

[Construction Fact Sheet](#)

[Construction Schedule 15.2](#)

Annual and Quarterly Reports: including (new) 2023 Annual Report, 2023 Q3 & Q4 Reports:

[Milton News, Documents and Resources | cn.ca](#)

### **Information:**

Project website: [cnmilton.ca](http://cnmilton.ca)

Project-specific enquiries: [cnmilton@cn.ca](mailto:cnmilton@cn.ca) or 1-800-216-9466

### **CN Information:**

CN Public Inquiry Line: 1-888-888-5909

**To report signal malfunctions or other safety concerns: 1-800-465-9239.**